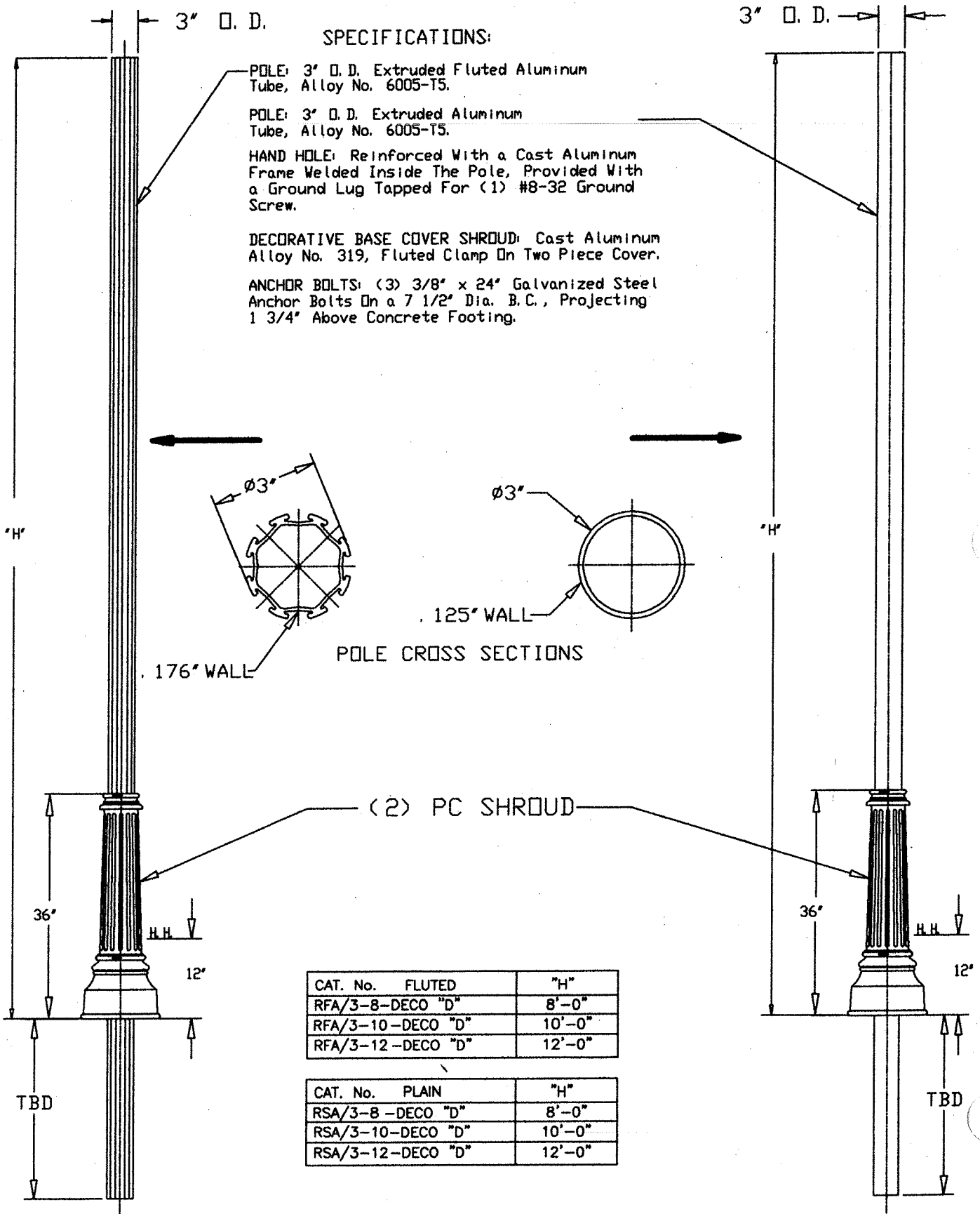
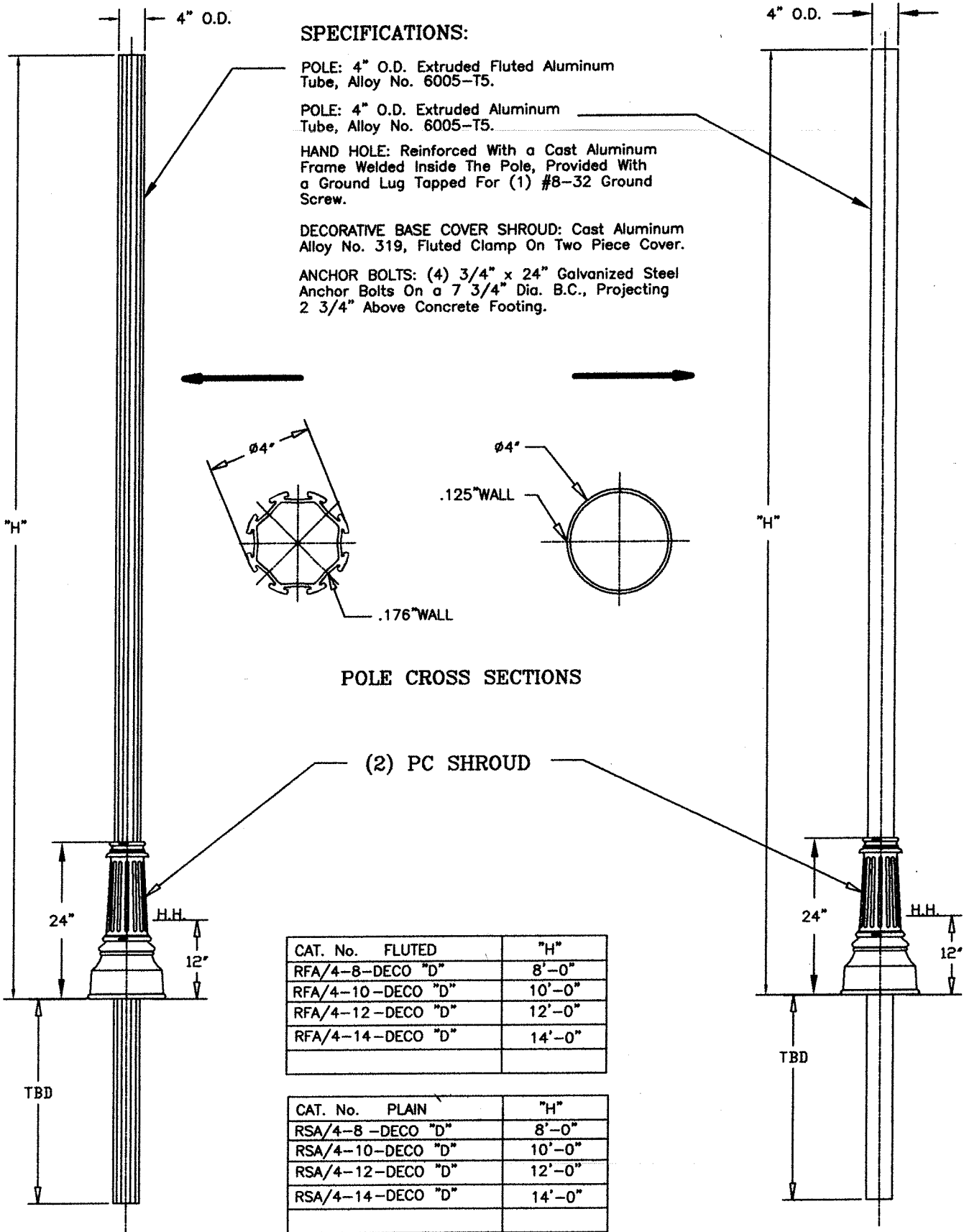


3" DIA. ROUND STRAIGHT FLUTED AND PLAIN ALUMINUM POLES, SERIES DECO "D". FOR DIRECT BURIAL POLE



4" DIA. ROUND STRAIGHT FLUTED AND PLAIN ALUMINUM POLES, SERIES DECO "D" FOR DIRECT BURIAL POLE



SPECIFICATIONS:

POLE: 4" O.D. Extruded Fluted Aluminum Tube, Alloy No. 6005-T5.

POLE: 4" O.D. Extruded Aluminum Tube, Alloy No. 6005-T5.

HAND HOLE: Reinforced With a Cast Aluminum Frame Welded Inside The Pole, Provided With a Ground Lug Tapped For (1) #8-32 Ground Screw.

DECORATIVE BASE COVER SHROUD: Cast Aluminum Alloy No. 319, Fluted Clamp On Two Piece Cover.

ANCHOR BOLTS: (4) 3/4" x 24" Galvanized Steel Anchor Bolts On a 7 3/4" Dia. B.C., Projecting 2 3/4" Above Concrete Footing.

POLE CROSS SECTIONS

(2) PC SHROUD

CAT. No.	FLUTED	"H"
RFA/4-8-DECO	"D"	8'-0"
RFA/4-10-DECO	"D"	10'-0"
RFA/4-12-DECO	"D"	12'-0"
RFA/4-14-DECO	"D"	14'-0"

CAT. No.	PLAIN	"H"
RSA/4-8-DECO	"D"	8'-0"
RSA/4-10-DECO	"D"	10'-0"
RSA/4-12-DECO	"D"	12'-0"
RSA/4-14-DECO	"D"	14'-0"

STREET LIGHTING EQUIPMENT CORPORATION

2099 South Park Rd. Hallandale Fl. 33009. Phone (954) 961-9140 Fax (954) 963-5794.

5" DIA. FLUTED & PLAIN ALUMINUM POLES DECO "MMM" SERIES.

SPECIFICATIONS:

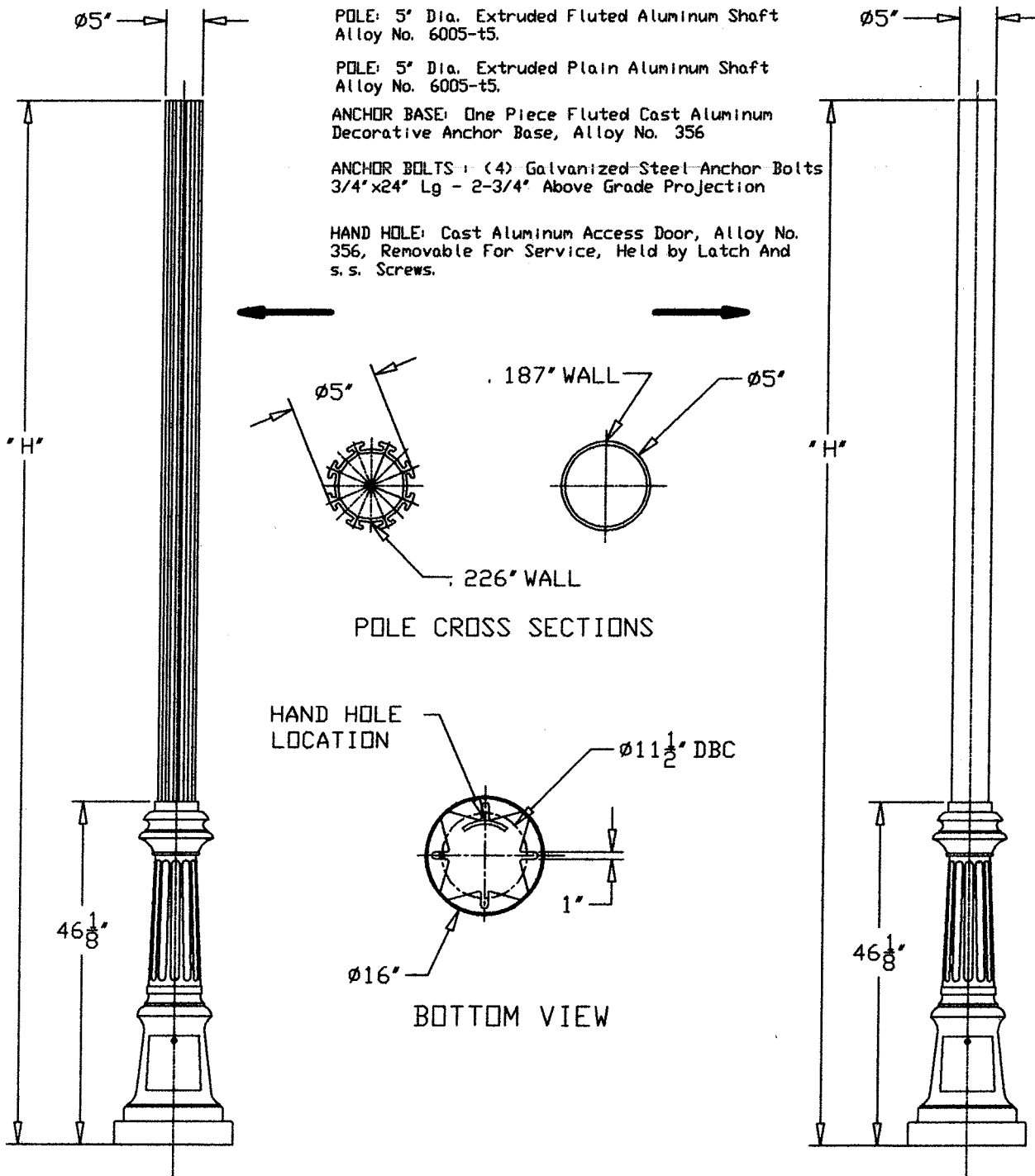
POLE: 5" Dia. Extruded Fluted Aluminum Shaft Alloy No. 6005-t5.

POLE: 5" Dia. Extruded Plain Aluminum Shaft Alloy No. 6005-t5.

ANCHOR BASE: One Piece Fluted Cast Aluminum Decorative Anchor Base, Alloy No. 356

ANCHOR BOLTS: (4) Galvanized Steel Anchor Bolts 3/4" x 24" Lg - 2-3/4" Above Grade Projection

HAND HOLE: Cast Aluminum Access Door, Alloy No. 356, Removable For Service, Held by Latch And s. s. Screws.



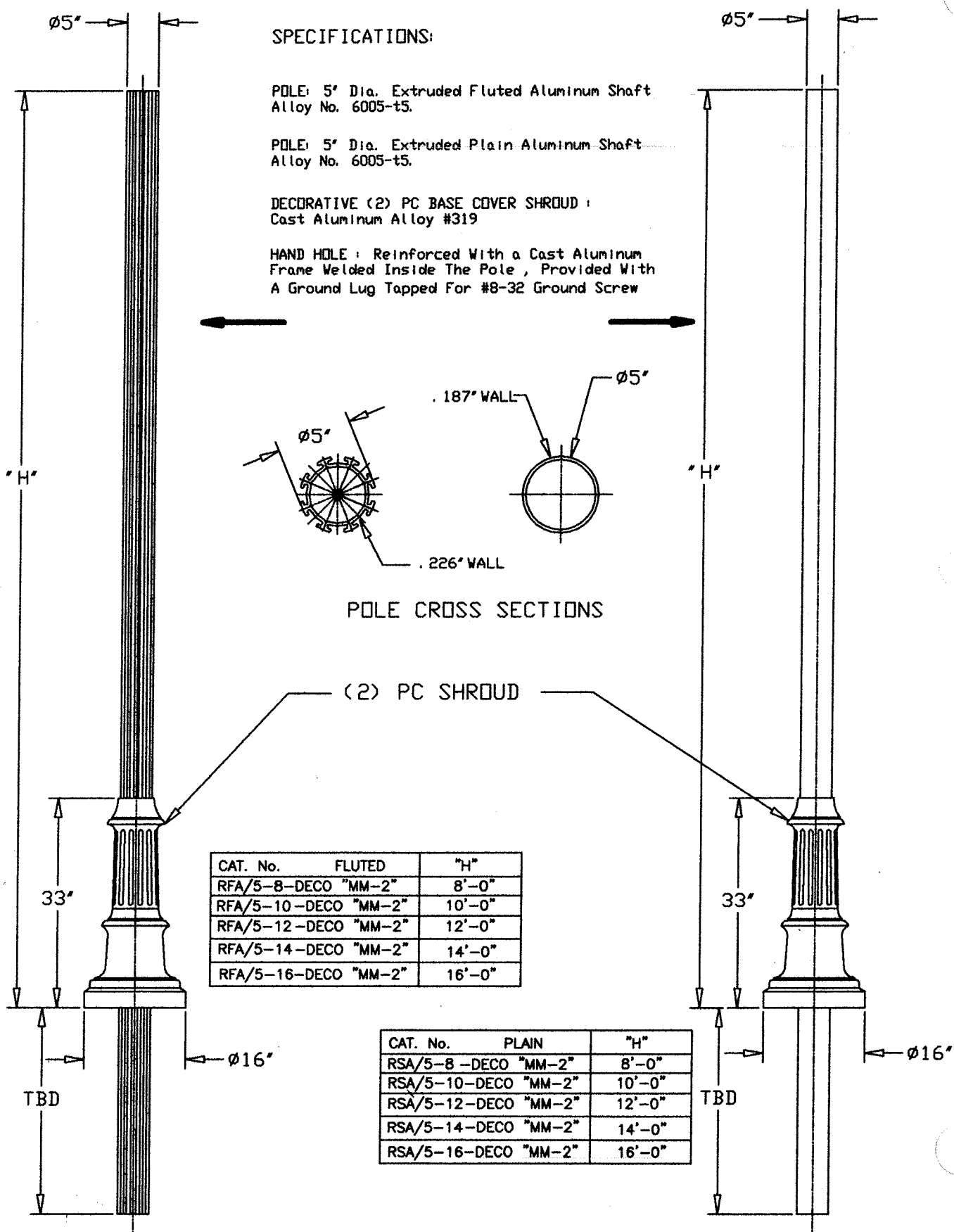
CAT. No.	FLUTED	"H"
RFA/5-8-DECO "MMM"		8'-0"
RFA/5-10-DECO "MMM"		10'-0"
RFA/5-12-DECO "MMM"		12'-0"
RFA/5-14-DECO "MMM"		14'-0"
RFA/5-16-DECO "MMM"		16'-0"

CAT. No.	PLAIN	"H"
RSA/5-8-DECO "MMM"		8'-0"
RSA/5-10-DECO "MMM"		10'-0"
RSA/5-12-DECO "MMM"		12'-0"
RSA/5-14-DECO "MMM"		14'-0"
RSA/5-16-DECO "MMM"		16'-0"

STREET LIGHTING EQUIPMENT CORPORATION

2099 South Park Rd. Hallandale Fl. 33009. Phone (954) 961-9140 Fax (954) 963-5794.

5" DIA. FLUTED & PLAIN ALUMINUM POLES DECO "MM-2" SERIES. FOR DIRECT BURIAL POLE



SPECIFICATIONS:

POLE: 5" Dia. Extruded Fluted Aluminum Shaft Alloy No. 6005-t5.

POLE: 5" Dia. Extruded Plain Aluminum Shaft Alloy No. 6005-t5.

DECORATIVE (2) PC BASE COVER SHROUD :
Cast Aluminum Alloy #319

HAND HOLE : Reinforced With a Cast Aluminum Frame Welded Inside The Pole , Provided With A Ground Lug Tapped For #8-32 Ground Screw

POLE CROSS SECTIONS

CAT. No.	FLUTED	"H"
RFA/5-8-DECO	"MM-2"	8'-0"
RFA/5-10-DECO	"MM-2"	10'-0"
RFA/5-12-DECO	"MM-2"	12'-0"
RFA/5-14-DECO	"MM-2"	14'-0"
RFA/5-16-DECO	"MM-2"	16'-0"

CAT. No.	PLAIN	"H"
RSA/5-8-DECO	"MM-2"	8'-0"
RSA/5-10-DECO	"MM-2"	10'-0"
RSA/5-12-DECO	"MM-2"	12'-0"
RSA/5-14-DECO	"MM-2"	14'-0"
RSA/5-16-DECO	"MM-2"	16'-0"

5" DIA. FLUTED & PLAIN ALUMINUM POLES DECO "MM" SERIES.

SPECIFICATIONS:

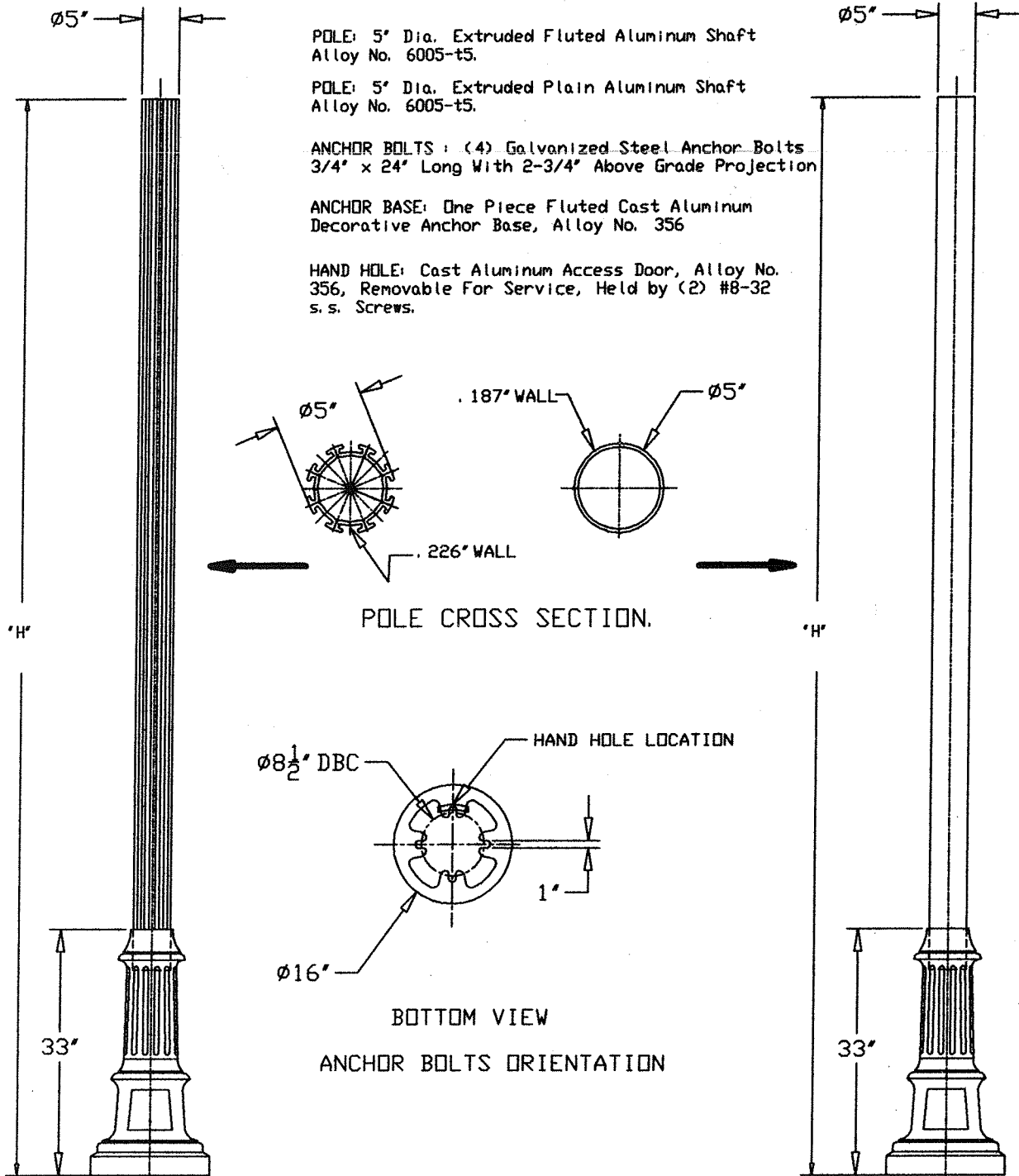
POLE: 5" Dia. Extruded Fluted Aluminum Shaft
Alloy No. 6005-t5.

POLE: 5" Dia. Extruded Plain Aluminum Shaft
Alloy No. 6005-t5.

ANCHOR BOLTS : (4) Galvanized Steel Anchor Bolts
3/4" x 24" Long With 2-3/4" Above Grade Projection

ANCHOR BASE: One Piece Fluted Cast Aluminum
Decorative Anchor Base, Alloy No. 356

HAND HOLE: Cast Aluminum Access Door, Alloy No.
356, Removable For Service, Held by (2) #8-32
s. s. Screws.



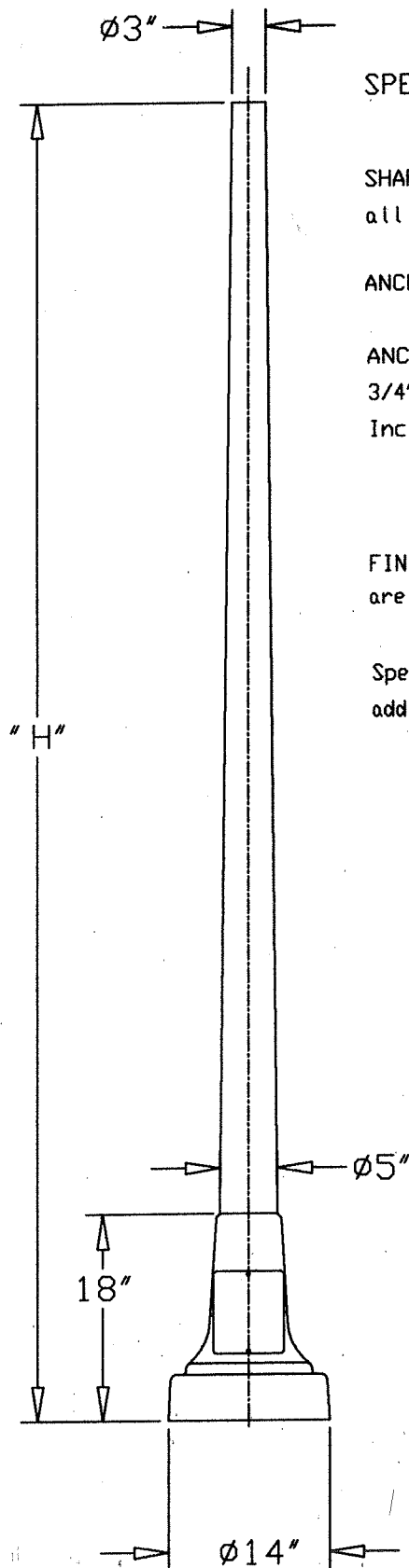
CAT. No.	FLUTED	"H"
RFA/5-8-DECO "MM"		8'-0"
RFA/5-10-DECO "MM"		10'-0"
RFA/5-12-DECO "MM"		12'-0"
RFA/5-14-DECO "MM"		14'-0"
RFA/5-16-DECO "MM"		16'-0"

CAT. No.	PLAIN	"H"
RSA/5-8-DECO "MM"		8'-0"
RSA/5-10-DECO "MM"		10'-0"
RSA/5-12-DECO "MM"		12'-0"
RSA/5-14-DECO "MM"		14'-0"
RSA/5-16-DECO "MM"		16'-0"

STREET LIGHTING EQUIPMENT CORPORATION

2099 South Park Rd. Hallandale Fl. 33009. Phone (954) 961-9140 Fax (954) 963-5794.

ROUND TAPERED POLE UPA SERIES.



SPECIFICATIONS:

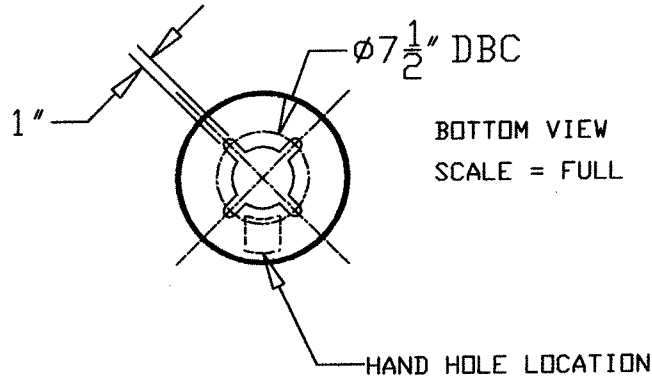
SHAFT: The shaft shall be spun tapered from all new seamless 6063 alloy aluminum tubing

ANCHOR BASE: Cast from 356 alloy aluminum

ANCHOR BOLTS : (4) Galvanized Steel Anchor Bolts
3/4" x 24" Lg and 2-3/4" Above Grade Projection
Includes Nuts And Washers

FINISHES: Baked electrostatic painted finishes are standard in semi-gloss black, white, gray, and dark bronze

Special finishes are available at additional cost.

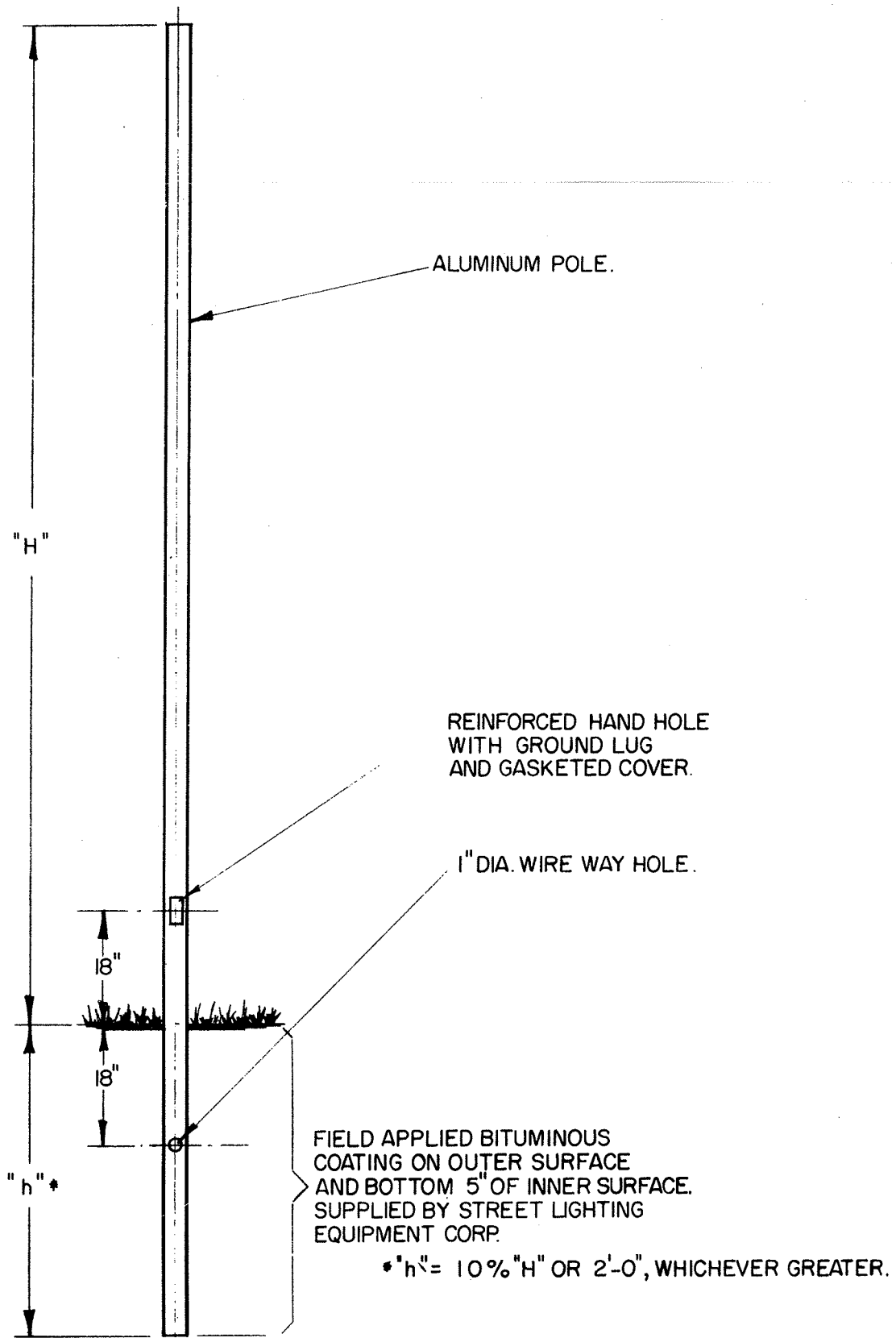


CAT. No.	"H"
UPA/5-3-10	10'-0"
UPA/5-3-12	12'-0"
UPA/5-3-14	14'-0"
UPA/5-3-16	16'-0"

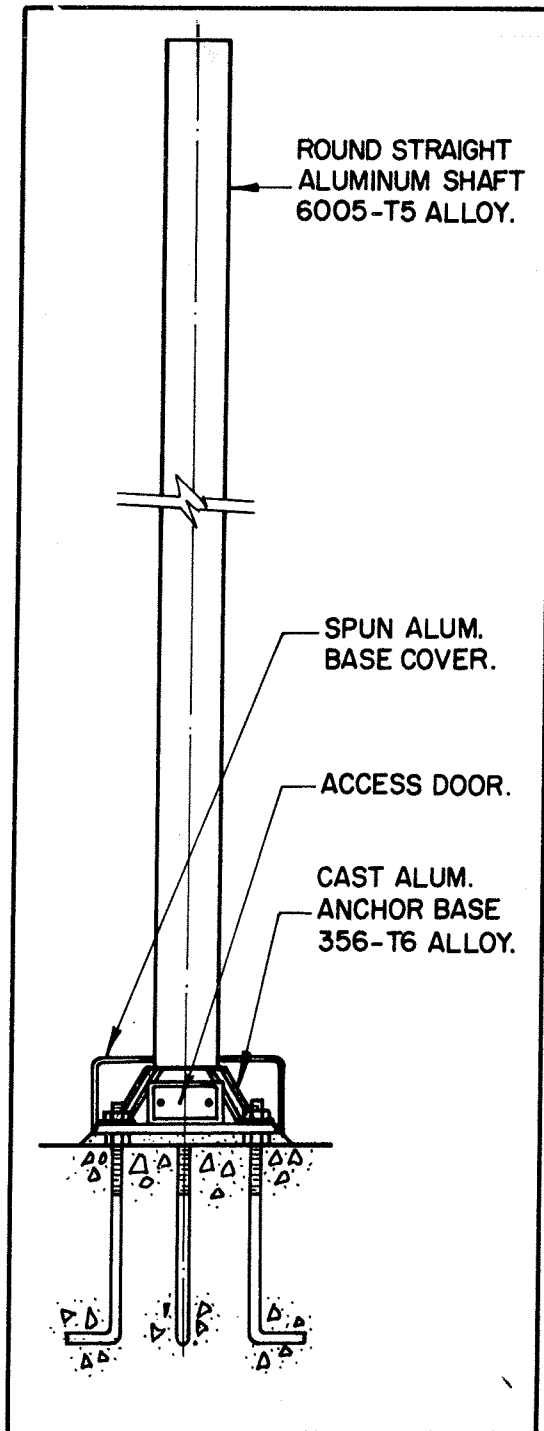
STREET LIGHTING EQUIPMENT CORPORATION.

2099 South Park Road, Hallandale FL, 33009. Phone (954) 961-9140 Fax (954) 963-5794.

DIRECT BURIAL POLES 3" O.D., 4" O.D. AND 4" SQ.



3" ROUND STRAIGHT ALUMINUM STANDARDS 6 to 12 Foot Mounting Height



SPECIFICATIONS

All aluminum alloys shall comply with metallurgical and mechanical properties set forth in the Aluminum Association Standards.

Shaft: Shall be extruded from all new seamless 6005 alloy aluminum and shall be heat treated to produce a Temper T5. Shaft may be drilled to manufacturer's specifications for mounting luminaires. An aluminum tenon may be supplied as an accessory item.

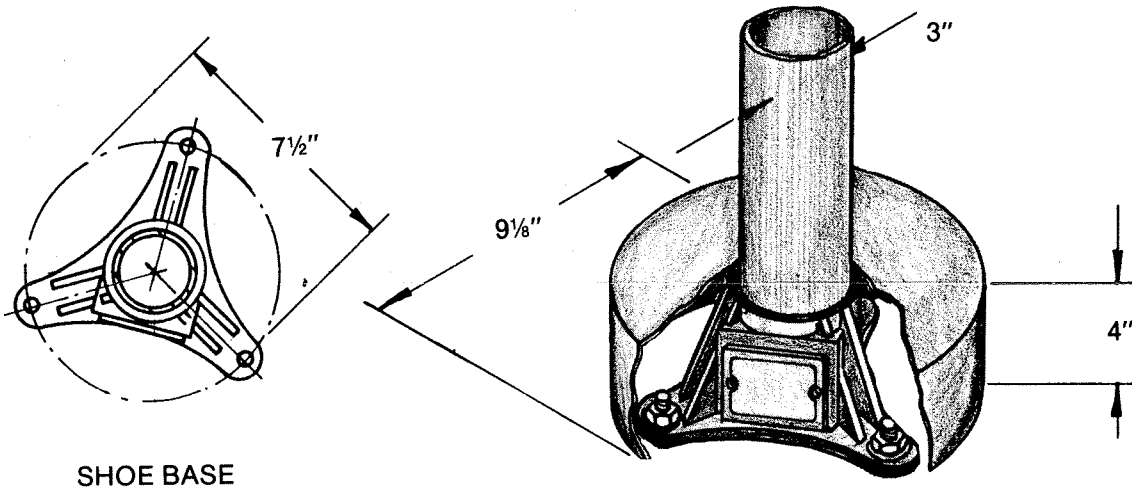
Anchor Base: Cast from 356 alloy aluminum, the anchor base shall be heat treated to a T6 condition. The shaft shall be inserted into the anchor base casting and shaft shall be joined by a continuous circumferential weld at the outside top of the anchor base.

Wire Access Door: Is located on the cast aluminum base and has a cast aluminum cover. The opening dimensions are 2 $\frac{3}{4}$ " horizontal by 1 $\frac{1}{2}$ " vertical.

Anchor Bolts: Each anchor base standard shall include three anchor bolts; each bolt to include two nuts and two flat washers. Schedule of standard sizes on reverse side.

Finishes: Standard finish is duranodic 313 anodized. Baked electrostatic painted finishes are standard in semi-gloss black, white and silver. Special finishes are available at additional cost.





SHOE BASE

ANCHOR BOLTS INFORMATION

BOLT CIRCLE BOLT SIZE BOLT PROJECTION
 7 1/2" 3/8" x 15" 1 3/4"

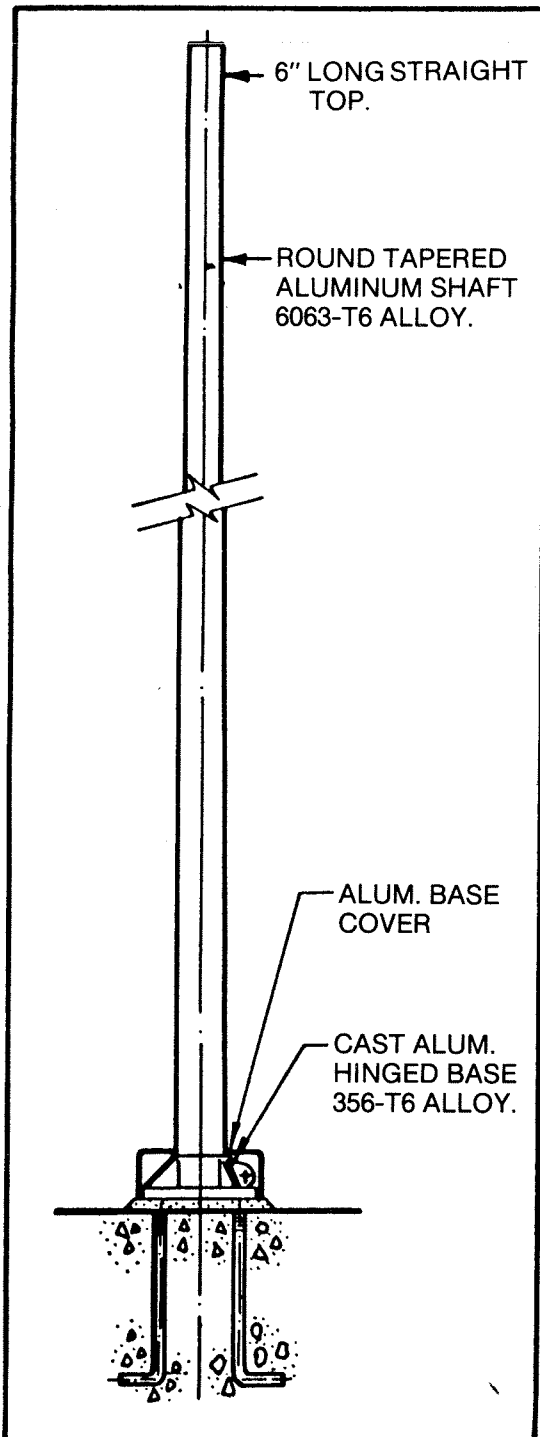
Nominal Pole Height	Luminaire Typical Weight Lbs.	Recommended Weight and size of Luminaire Effective Projected Area in Square Feet at:					Dimension of Standards Model	
		70 MPH	80 MPH	90 MPH	100 MPH	120 MPH	OD Wall	Number
6	240	14.24	10.80	8.44	6.75	4.55	3	.125" RSA/3-6
8	240	10.38	7.79	6.02	4.75	3.10	3	.125" RSA/3-8
10	240	7.99	5.97	4.50	3.49	2.17	3	.125" RSA/3-10
12	240	6.34	4.83	3.43	2.59	1.49	3	.125" RSA/3-12

Variations from standard sizes listed above available upon inquiry at factory.

Satisfactory performance of lighting standards is dependent upon the standard being properly attached to a supporting foundation of adequate design. Street Lighting Equipment does not design or offer recommendations of foundations.



4" - 3" ROUND TAPERED ALUMINUM STANDARDS
8 to 12 Foot Mounting Heights.



SPECIFICATIONS

All aluminum alloys shall comply with metallurgical and mechanical properties set forth in the Aluminum Association Standards.

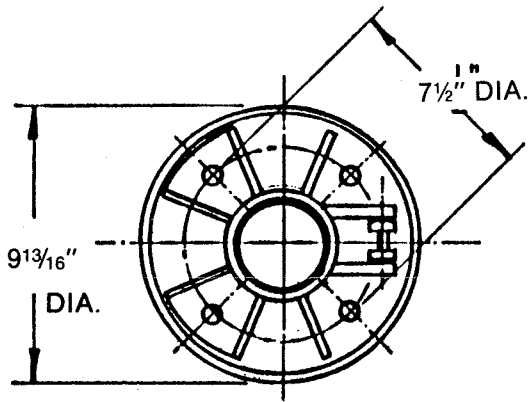
Shaft: The shaft shall be spun tapered from all new seamless 6063 alloy aluminum tubing and shall be heat-treated to produce a T6 temper. Shaft may be drilled to manufacturers specifications for mounting luminaires. An aluminum tenon may be specified as an accessory item.

Anchor Base: Cast from 356 alloy aluminum the anchor base shall be heat treated to a T6 condition. The shaft shall be inserted into the anchor base casting and shaft shall be joined by a continuous circumferential weld at the outside top and inside bottom of the hinge base.

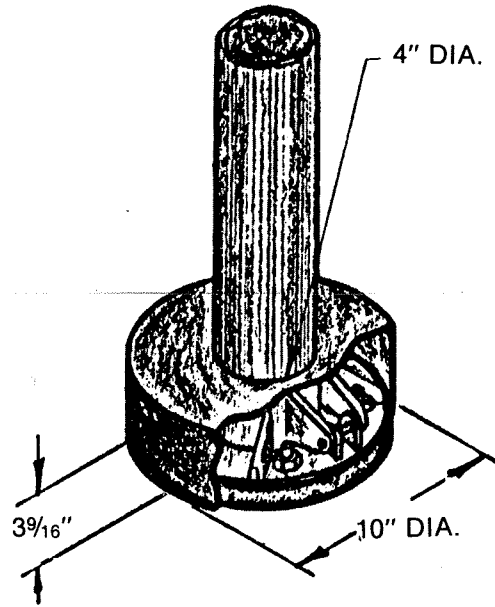
Anchor Bolts: Each anchor base standard shall include four anchor bolts, double nuts and two flat washers sized to match the anchor bolts. Schedule of standard sizes on reverse side.

Finishes: Standard finish is duranodic 313 anodized. Baked electrostatic painted finishes are standard in semi-gloss black, white and silver. Special finishes are available at additional cost.





HINGED BASE.



ANCHOR BOLTS INFORMATION

BOLT PROJECTION
3/4"

BOLTS SIZE
3/4" x 24"

CONDUIT OPENING
3/4"

BOLT CIRCLE
7 1/2" DIA.

Nominal Pole Height	Luminaire Typical Weight	Recommended Weight and Height of Luminaire Effective Projected Area in Square Feet at					Dimension Standards Model			
		70 MPH	80 MPH	90 MPH	100 MPH	120 MPH	Top	Bott	Wall	Number
8	50	14.4	10.8	8.3	6.6	4.3	3	4	.125	RTA/43-8
10	50	10.7	7.9	6.0	4.6	2.9	3	4	.125	RTA/43-10
12	50	8.1	5.8	4.3	3.2	1.8	3	4	.125	RTA/43-12

Variations from standard sizes listed above available upon inquiry at factory.

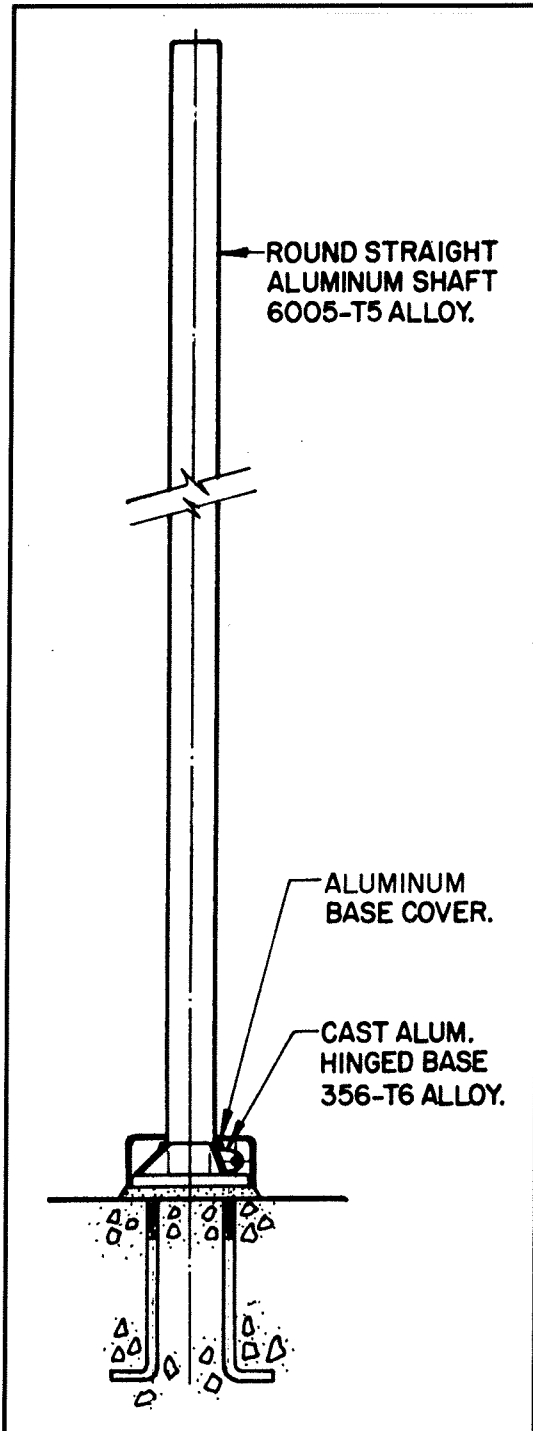
Satisfactory performance of lighting standards is dependent upon the standard being properly attached to a supporting foundation of adequate design. Street Lighting Equipment does not design or offer recommendations of foundations.



4" Round Straight Aluminum Standards

8 TO 15 FOOT MOUNTING HEIGHTS

Luminaire may be mounted on tenons, brackets or pole may be drilled to manufacturer's specifications.



Specifications

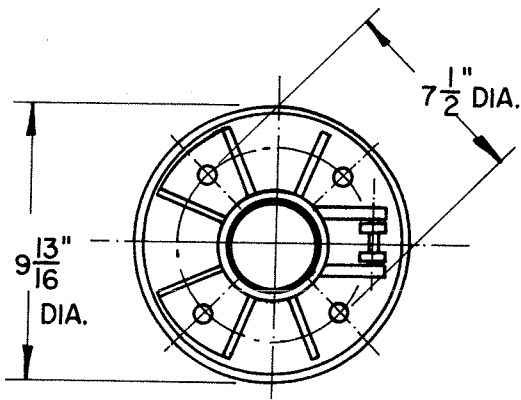
All aluminum alloys shall comply with metallurgical and mechanical properties set forth in the Aluminum Association Standards.

Shaft: Shall be extruded from all new seamless 6005 alloy aluminum and shall be heat treated to produce a T5 Temper. Shaft may be drilled to manufacturer's specifications for mounting luminaires. An aluminum tenon may be specified as an accessory item.

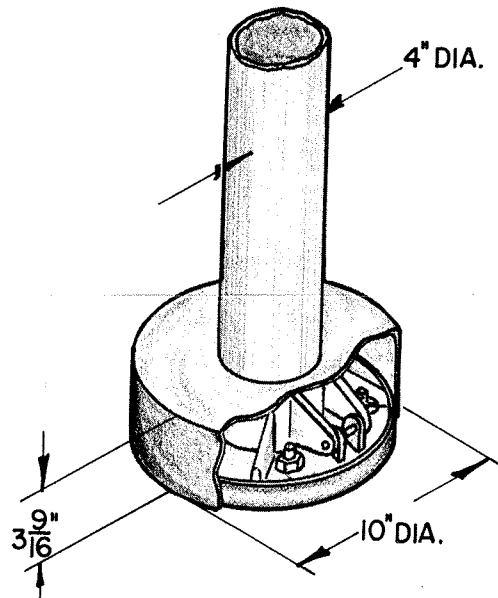
Anchor Base: Cast from 356 alloy aluminum the anchor base shall be heat treated to a T6 condition. The shaft shall be inserted into the anchor base casting and shaft shall be joined by a continuous circumferential weld at the outside top and inside bottom of the hinge base.

Anchor Bolts: Each anchor base standard shall include four anchor bolts, double nuts and two flat washers sized to match the anchor bolts. Schedule of standard sizes on reverse side.

Finishes: Standard finish is duranodic 313 anodized. Baked electrostatic painted finishes are standard in semi-gloss black, white and silver. Special finishes are available at additional cost.



HINGED BASE



Anchor Bolts Information:

BOLTS PROJECTION	BOLTS SIZE	CONDUIT OPENING	BOLT CIRCLE
3 1/4"	3/4" x 24"	3 3/4"	7 1/2" Diameter

NOMINAL POLE HEIGHT	LUMINAIRE TYPICAL WEIGHT/LBS	RECOMMENDED WEIGHT AND HEIGHT OF LUMINAIRE EFFECTIVE PROJECTED AREA IN SQ. FT. AT					DIMENSIONS OF STANDARDS		
		70 MPH.	80 MPH.	90 MPH.	100 MPH.	120 MPH.	O.D.	WALL	MODEL No.
8	240	20.16	15.23	11.86	9.44	6.29	4"	.125"	RSA/4-8
10	240	15.71	11.77	9.06	7.13	4.61	4"	.125"	RSA/4-10
12	240	12.66	9.38	7.13	5.51	3.41	4"	.125"	RSA/4-12
14	240	10.42	7.61	5.67	4.29	2.49	4"	.125"	RSA/4-14
15	240	9.50	6.87	5.07	3.78	2.10	4"	.125"	RSA/4-15

Variations from standard sizes listed above available upon inquiry at factory.

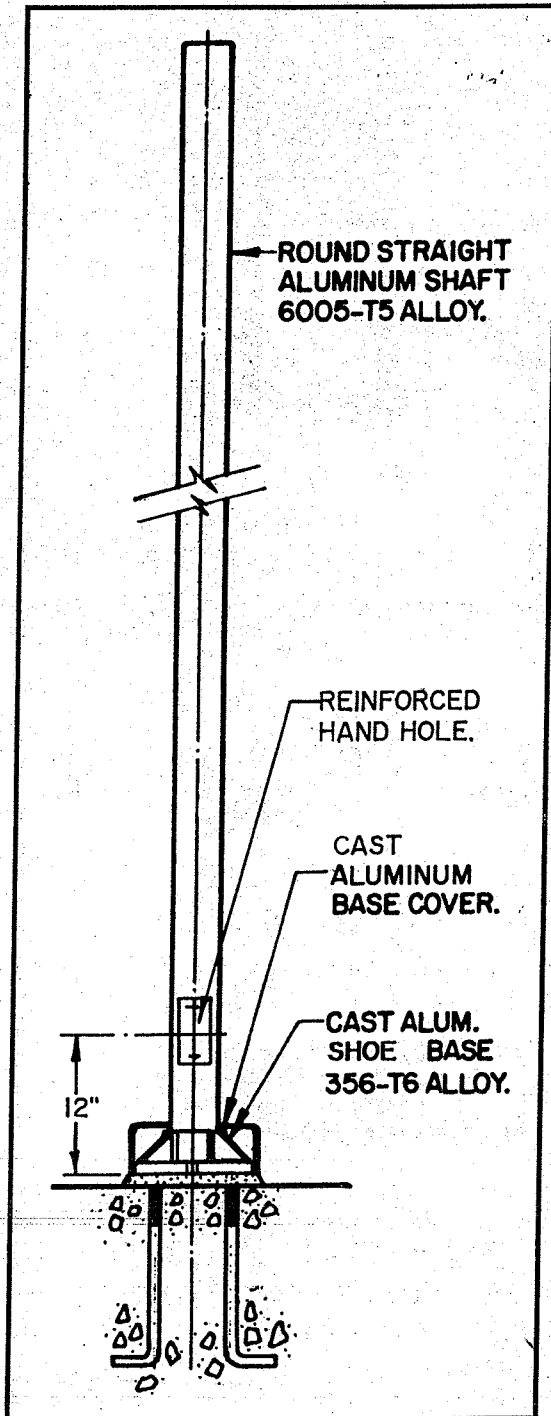
Satisfactory performance of lighting standards is dependent upon the standard being properly attached to a supporting foundation of adequate design. Street Lighting Equipment Corporation does not design, or offer recommendations for, foundations.



4" Round Straight Aluminum Standards

8 TO 15 FOOT MOUNTING HEIGHTS

Luminaire may be mounted on tenons, brackets or pole may be drilled to manufacturer's specifications.



Specifications

All aluminum alloys shall comply with metallurgical and mechanical properties set forth in the Aluminum Association Standards.

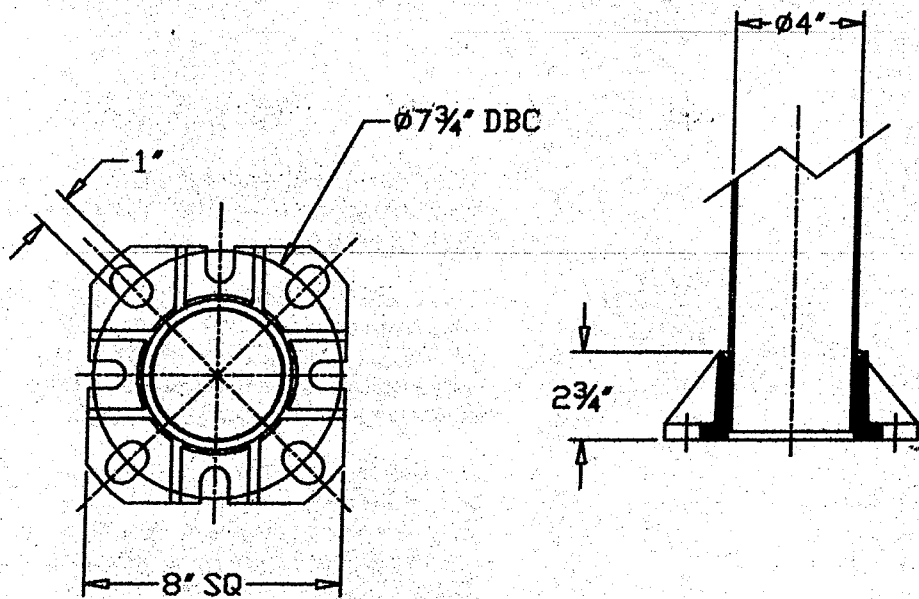
Shaft: Shall be extruded from all new seamless 6005 alloy aluminum and shall be heat treated to produce a T5 Temper. Shaft may be drilled to manufacturer's specifications for mounting luminaires. An aluminum tenon may be specified as an accessory item.

Anchor Base: Cast from 356 alloy aluminum the anchor base shall be heat treated to a T6 condition. The shaft shall be inserted into the anchor base casting and shaft shall be joined by a continuous circumferential weld at the outside top and inside bottom of the Shoe base.

Anchor Bolts: Each anchor base standard shall include four anchor bolts, double nuts and two flat washers sized to match the anchor bolts. Schedule of standard sizes on reverse side.

Finishes: Standard finish is duranodic 313 anodized. Baked electrostatic painted finishes are standard in semi-gloss black, white and silver. Special finishes are available at additional cost.





ANCHOR BOLT INFORMATION

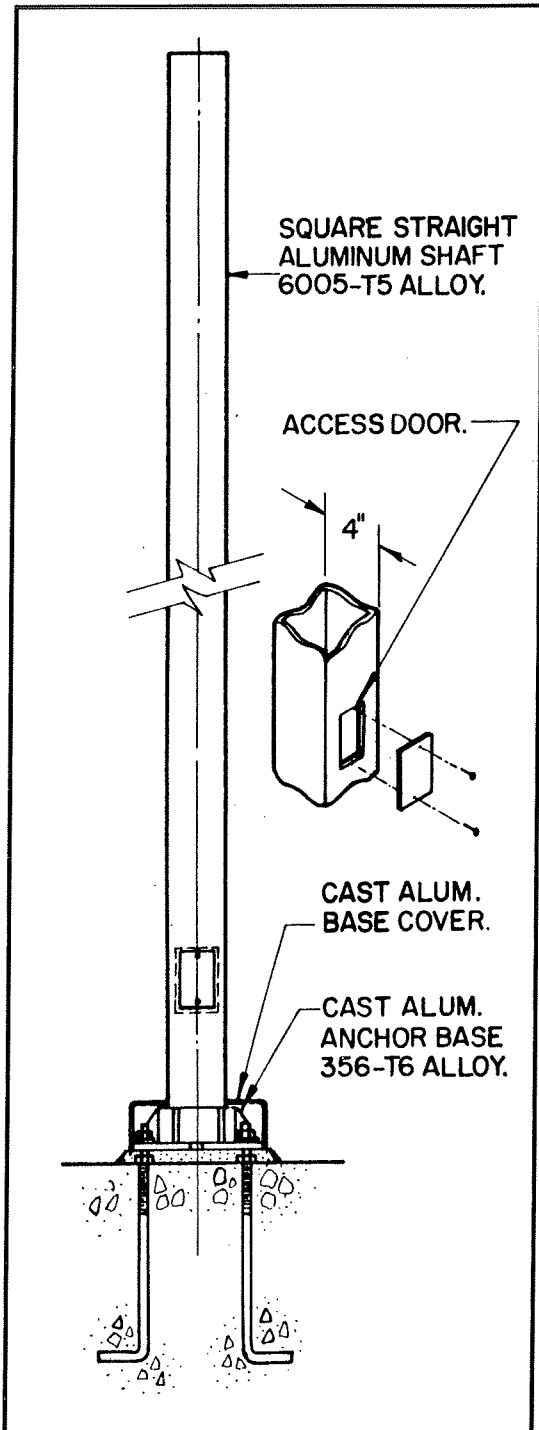
BOLT PROJECTION	BOLT SIZE	CONDUIT OPENING	BOLT CIRCLE
3-1/4"	3/4" X 24"	$\phi 3\text{-}3/4$ "	$\phi 7\text{-}3/4$ "

Satisfactory performance of lighting is dependent upon the standard being properly attached to a supporting foundation of adequate design. Street Lighting Equipment Corporation does not design, or offer recommendations for foundations.



4" Square Straight Aluminum Standards

8 TO 18 FOOT MOUNTING HEIGHTS



Specifications

All aluminum alloys shall comply with metallurgical and mechanical properties set forth in Aluminum Association Standards.

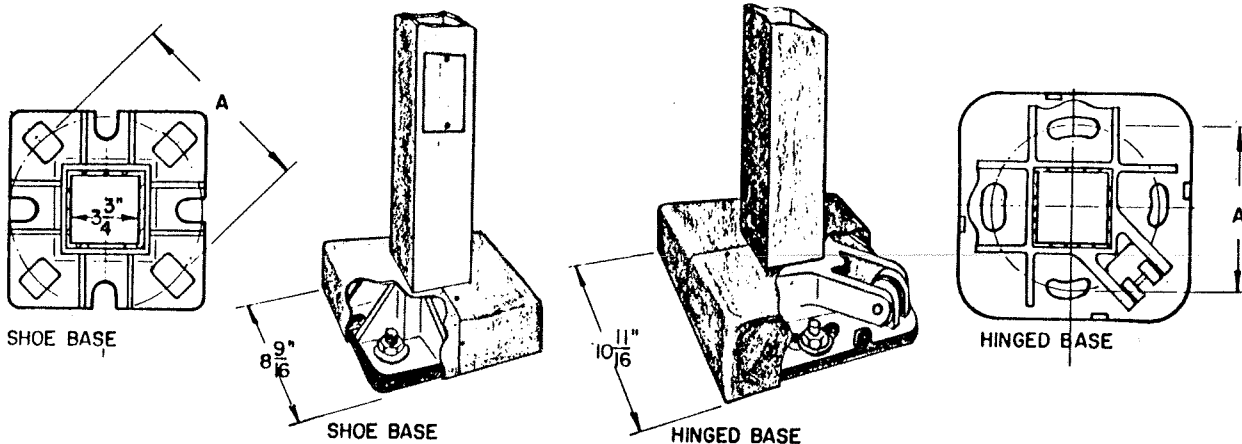
Shaft: Shall be extruded from all new 6005 alloy aluminum and shall be heat treated to produce a T5 Temper. Standards shall be supplied with a top closure when the standards are to be drilled, (to manufacturer's specifications), for side mounting of luminaires when required. An aluminum tenon may be supplied as an accessory item.

Anchor Base: Cast from 356 alloy aluminum, the anchor base shall be heat treated to produce a T6 condition. The shaft shall be inserted into the anchor base casting and shaft shall be joined by a continuous circumferential weld at the outside top and inside bottom of the anchor base. A two-piece cast aluminum base cover is included with the product.

Hand Holes: All square standards shall include a covered hand hole centered 12" above the bottom of the standard. The opening shall be rectangular in shape with the major dimension along the vertical axis. The opening in the 4" square standard shall be 2" by 4".

Anchor Bolts: Each square standard shall include four anchor bolts. Each bolt shall have two nuts and two flat washers sized to match the anchor bolts. Schedule of standard sizes on reverse side.

Finishes: Standard finish is duranodic 313 anodized. Baked electrostatic painted finishes are standard in semi-gloss black, white and silver. Special finishes are available at additional cost.



4" Square Poles Anchor Bolts and Base Information

POLE HEIGHT	BASE TYPE	"A" BOLT CIRCLE	BOLT SIZE	BOLT PROJECTION	CONDUIT OPENING
8-18	Shoe	8"	3/4" x 24"	2 3/4 ± 1/8"	3 3/4"
8-16	Hinged	7 1/2"	3/4" x 24"	2 3/4 ± 1/8"	3 3/4"

NOMINAL POLE HEIGHT	LUMINAIRE TYPICAL WEIGHT/LBS	RECOMMENDED WEIGHT AND HEIGHT OF LUMINAIRE EFFECTIVE PROJECTED AREA IN SQ. FT. AT					DIMENSIONS OF STANDARDS		
		80 MPH.	90 MPH.	100 MPH.	120 MPH.	120 MPH.*	O.D.	WALL	MODEL No.
10	240	14.38	11.03	8.63	7.36	8.33	4"	.125"	SSA/4-10
12	240	11.37	8.58	6.58	3.98	6.33	4"	.125"	SSA/4-12
14	240	9.12	6.73	5.02	2.79	4.80	4"	.125"	SSA/4-14
16	240	5.96	4.25	3.02	1.43	2.87	4"	.125"	SSA/4-16
18	240	4.67	3.15	2.06	.64	1.92	4"	.125"	SSA/4-18

Variations from standard sizes listed above available upon inquiry at factory.

E.P.A. calculations allow for 1.3 gust factor.

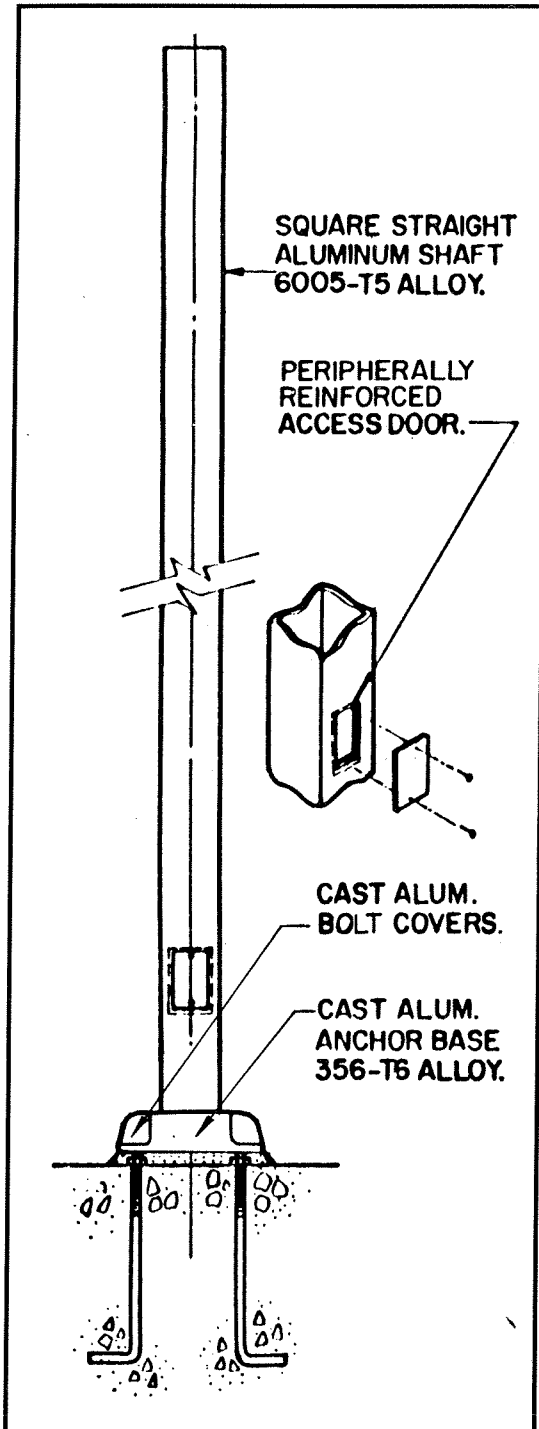
*Especially fabricated for greater E.P.A. rating where required.

Satisfactory performance of lighting standards is dependent upon the standard being properly attached to a supporting foundation of adequate design. Street Lighting Equipment Corporation does not design, or offer recommendations for, foundations.



5" and 6" Square Straight Aluminum Standards

18 TO 30 FOOT MOUNTING HEIGHTS



Specifications

All aluminum alloys shall comply with metallurgical and mechanical properties set forth in the Aluminum Association Standards.

Shaft: The shaft shall be extruded from all new 6005 aluminum and shall be heat treated to produce a T5 Temper. Standards shall be supplied with a top closure when the standards are to be drilled (to manufacturer's specification) for side mounting of luminaires, when required. An aluminum tenon may be specified as an accessory item.

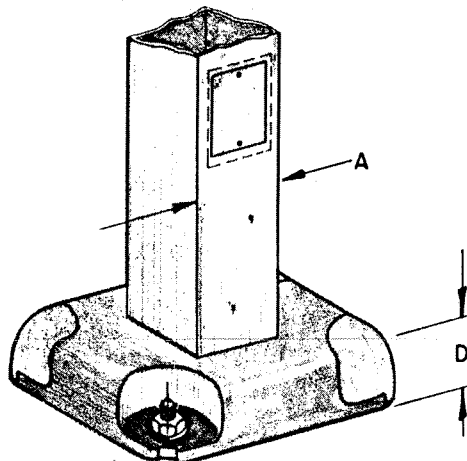
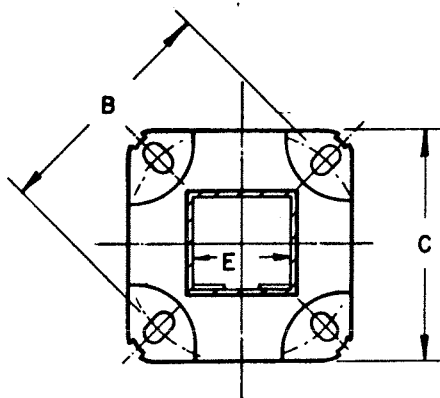
Anchor Base: Cast from 356 alloy aluminum, the anchor base shall be heat treated to produce a T6 condition. The shaft shall be inserted into the anchor base casting. The anchor base casting and shaft shall be joined by a continuous circumferential weld at the outside top and inside bottom of the anchor base. Four cast aluminum bolt covers are included with this product.

Hand Holes: All square standards shall include a peripherally reinforced covered hand hole centered 18" above the bottom of the standard. The opening shall be rectangular in shape with the major dimension along the vertical axis. The opening in the 5" and 6" square standards shall be 3" by 6½".

Anchor Bolts: Each square standard shall include four anchor bolts. Each bolt shall have two nuts and two flat washers sized to match the anchor bolts. Schedule of standard sizes on reverse side.

Finishes: Standard finish is duranodic 313 anodized. Baked electrostatic painted finishes are standard in semi-gloss black, white and silver. Special finishes are available at additional cost.





SHOE BASE

(HINGED BASE ALSO AVAILABLE IN BOTH SIZES)

Anchor Bolts and Base Information

"A" SQUARE SIZE	"B" BOLT CIRCLE	BOLT PROJECTION	BOLT SIZE	"C" BASE WIDTH	"D" BASE HEIGHT	"E" CONDUIT OPENING
5	10½"	2½"	1" x 32"	10 ⁹ / ₁₆ "	3"	4 ⁵ / ₈ "
6	12"	2½"	1" x 32"	13"	3½"	5½"

NOMINAL POLE HEIGHT	LUMINAIRE TYPICAL WEIGHT/LBS	RECOMMENDED WEIGHT AND HEIGHT OF LUMINAIRE EFFECTIVE PROJECTED AREA IN SQ. FT. AT					DIMENSIONS OF STANDARDS		
		80 MPH.	90 MPH.	100 MPH.	120 MPH.	120 MPH.*	O.D.	WALL	MODEL No.
18	240	13.78	10.20	7.65	4.33	7.27	5"	.188"	SSA/5-18
20	240	11.61	8.30	6.10	3.10	5.75	5"	.188"	SSA/5-20
22	240	9.76	6.83	4.75	2.02	4.43	5"	.188"	SSA/5-22
24	240	8.14	5.47	3.55	1.06	3.27	5"	.188"	SSA/5-24
24	240	18.84	13.72	10.07	5.30	9.48	6"	.250"	SSA/6-24
25	240	7.41	4.84	3.00	.61	2.73	5"	.188"	SSA/5-25
25	240	17.60	12.68	9.17	4.60	8.61	6"	.250"	SSA/6-25
26	240	14.60	10.39	7.38	3.45	6.90	6"	.250"	SSA/6-26
28	240	12.59	8.68	5.88	2.24	5.44	6"	.250"	SSA/6-28
30	240	10.79	7.14	4.53	1.12	4.11	6"	.250"	SSA/6-30

Variations from standard sizes listed above available upon inquiry at factory.

E.P.A. calculations allow for 1.3 gust factor.

*Especially fabricated for greater E.P.A. rating where required.

Satisfactory performance of lighting standards is dependent upon the standard being properly attached to a supporting foundation of adequate design. Street Lighting Equipment Corporation does not design, or offer recommendations for foundations.

